

Dear neighbour

Chemical Engineering and Biotechnology

project newsletter No 7

MORGAN SINDALL

June 2014

safe

on time

snag free

delighted client

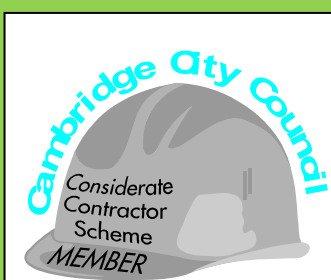
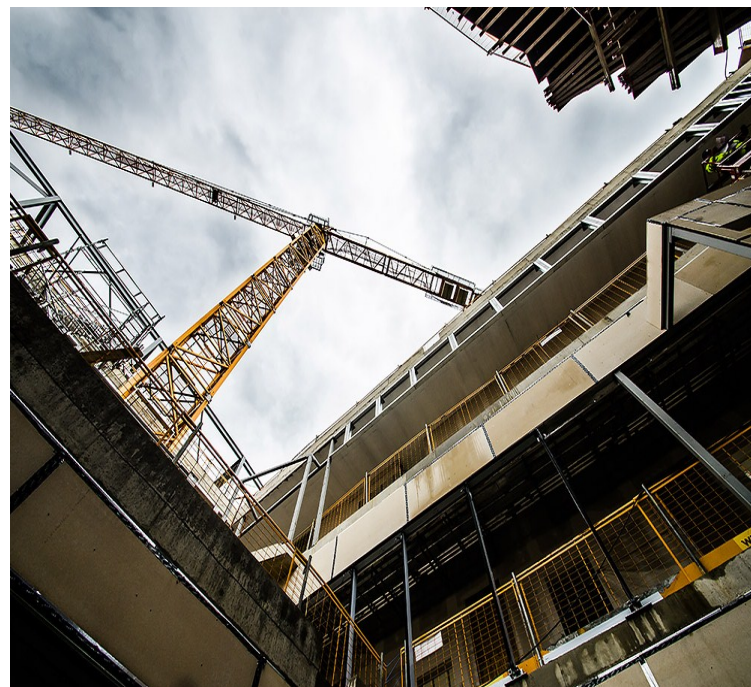
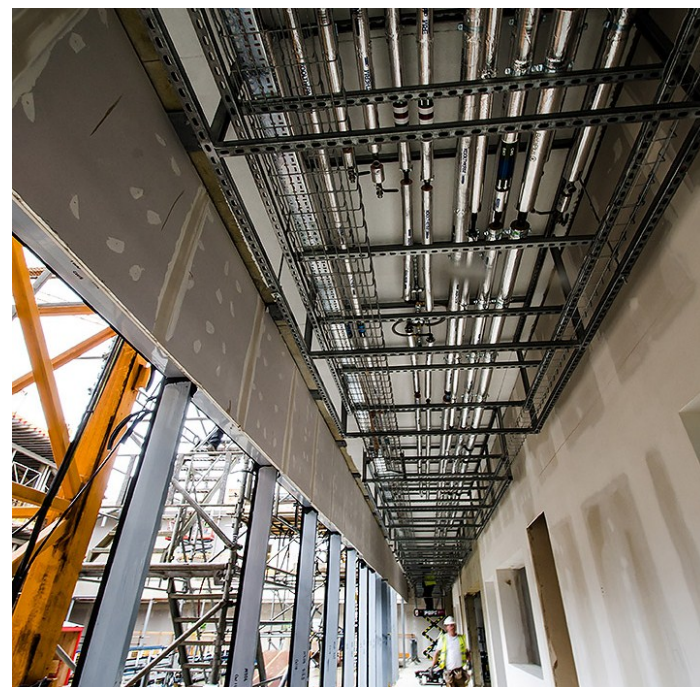
recommended

With An official and traditional topping out ceremony was held at the end of May to celebrate reaching one of the highest points of the concrete frame. The dignitaries attending included the Vice-Chancellor of the University, Professor Sir Leszek Borysiewicz, and Pro-Vice-Chancellor for Research Professor Lynn Gladden as well as the Head of Department for Chemical Engineering and Biotechnology, Professor Nigel Slater.

The internal modules which hold the Mechanical and Electrical (M&E) services (as pictured) are being installed on the upper floors; this has saved a great deal of time compared to traditional on-site installation. The external risers which also hold M&E services will also be brought on to site in the next month or so and this will enable the building to start taking its final shape.

Spreading high above the concrete frame, the plantroom steelwork is clearly progressing at a rapid rate. Being installed using the largest tower crane on site, the curved steelwork has again enabled the facility to take a more finished look. This along with the curtain walling and glazing being installed, has meant the building its moving quickly towards being weather tight. This key milestone in the project will enable the internal features to evolve knowing that they are safe from the elements.

Some of the more unnoticed items such as concrete sealing, drainage and builderswork holes have been on-going for the last few weeks and are progressing well. The amount of labour is forever increasing as different trades increase on site. Currently, the external façade subcontractor has the largest number of workers, which until last week was held by the Groundworkers; this shows the shift in focus for the site and the project.



Enhancing the Appearance
Respecting the Community
Protecting the Environment
Securing everyone's Safety

Considerate Constructors Scheme
CCS Registered No. 73891
Registered Site www.ccsscheme.org.uk
CCS Score 43

Charlie Norris is currently involved in a campaign with a Charity called Mind Your Head which kicked off in May. His involvement is focusing mainly on the Construction Industry, ahead of a bigger event this autumn. The Charity has the potential to transform the lives of people with brain injury's and even to prevent it from happening in the first place. If you feel that this is something you can help with visit mindyourhead.brainhtc.org



Coming up on site

Over the next few weeks, glass will be installed to the courtyard, and more curtain walling frames will be seen around the building. The steelwork on the roof will finish shortly and the external risers will be on site, ready to be hung from the top concrete slab. This will then provide opportunity to start installation of the red zinc façade which will be a key feature of this fantastic facility

If you have any questions or concerns, please contact your team (pictured below) in the site office. If the office is closed, then please call our HQ on 01223 836611, or one of the project team staff on the numbers shown below.

Charlie Norris
Operations Director
07792 342853



Toby Lucas
Senior Site Manager
07790 946026



Toby Farlow
Senior Engineer
07896 675005



Toby Simmons
Senior Engineer
01223651621

